

PARTS OF SECTIONS 11, 12, 13, 14, T. 6 N., R. 3 E., S. L. B. & M.
CAUSEY ESTATES SUBDIVISION NO. 3
 LOTS 115-118, 121

89

TAXING UNIT: 58

IN WEBER COUNTY

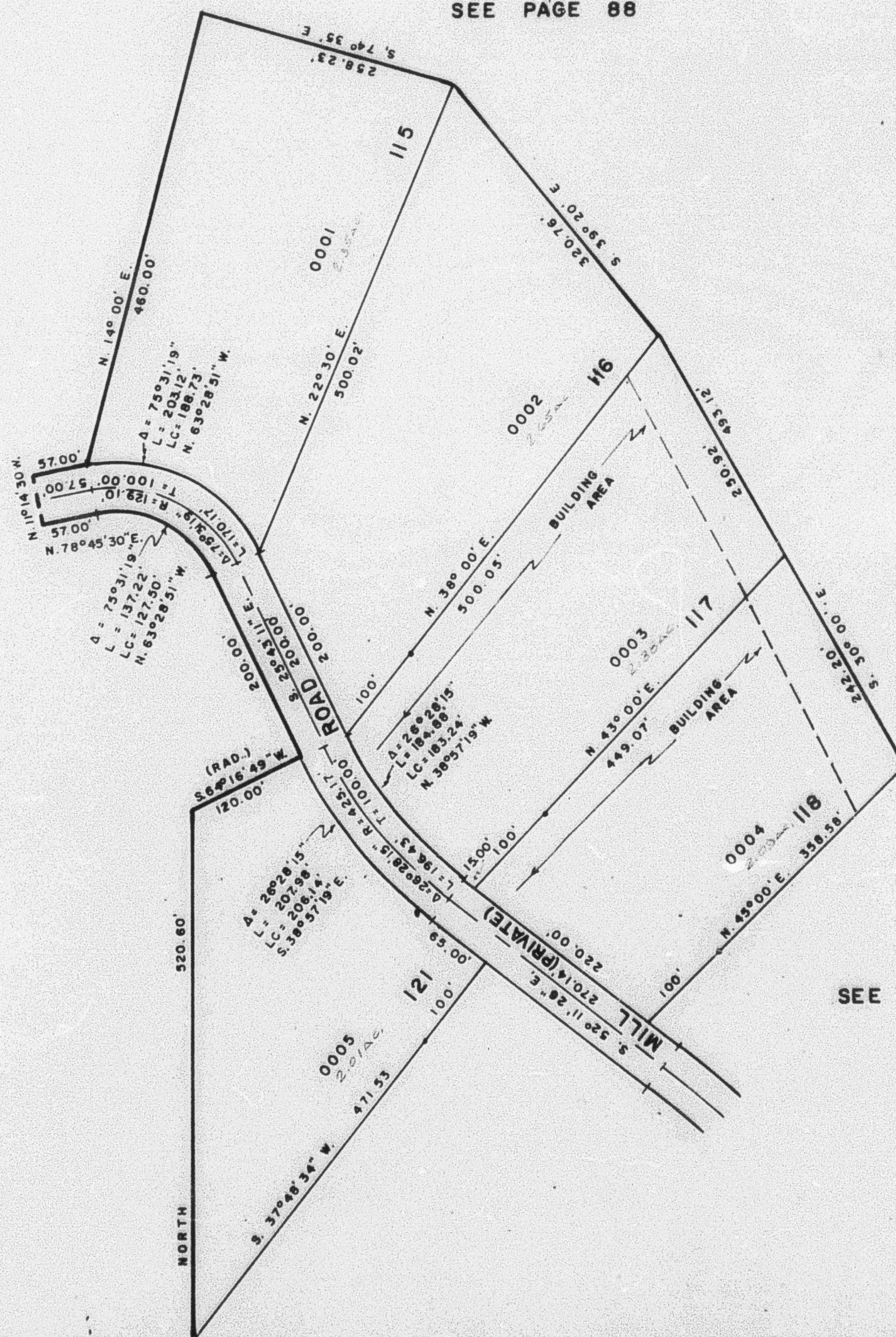
PREFIX: 23-000

SCALE 1" = 100'

EXCEPT WHERE OTHERWISE SHOWN
 ALL LOTS OWNED BY
 BASIN LAND DEVELOPMENT CO.

SEE PAGE 88

SEE PAGE 88



SEE PAGE 90

FOR COMPLETE ENG. DATA
 SEE ORIG. DED. PLAT IN
 BOOK 24, PAGES 38, 39, 40.